

Government funded services

Neurocare is funded by the WA Department of Health or through NDIS for eligible clients. There is no out-of-pocket cost to clients eligible for funded services.

Our navigators may be able to help you access essential care and equipment at no cost or low cost. Support for making My Aged Care and NDIS applications is also available.



Please support us with a donation or bequest

A gift in your Will or donation to the Neurological Council of WA will make a positive difference to the many children, adults and families affected by neurological conditions.

Your generosity enables us to continue to provide essential neurological nursing services, deliver important brain health advocacy, education and support, and expand services across metropolitan, regional and remote Western Australia.

We value our relationship with donors and welcome discussions about your specific philanthropic objectives. If you would like to leave a legacy, please contact us to explore options.

Donations can be made via our website or by contacting us on (08) 6457 7533.

All donations are tax deductible.



Neurological Council of WA

Neurological Council of WA
Phone: 1800 645 771
admin@ncwa.com.au
PO Box 476 NEDLANDS WA 6909

Office Hours
8.30am – 4.30pm weekdays

+ PERTH - HEAD OFFICE

QEII Medical Campus
The Niche | Suite B
11 Aberdare Rd
Nedlands WA 6009
P: (08) 6457 7533
F: (08) 6457 7534

+ ALBANY

Lotteries House Building
211-217 North Rd
Centennial Park WA
P: (08) 9841 5233
F: (08) 9841 5433

+ BUNBURY

Homemakers Centre
16C / 42 Strickland St
Bunbury WA
P: (08) 9792 4073
F: (08) 9791 7624

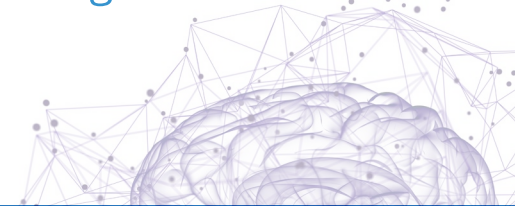
+ GERALDTON

Lotteries House Building
114 Sanford St
Geraldton WA
P: (08) 9938 0780
F: (08) 9964 8481

www.ncwa.com.au



Neurological Council of WA



+ Providing Neurocare community neurological nursing & navigation

+ Improving awareness, understanding & management of neurological conditions

+ Promoting brain & spinal cord health

www.ncwa.com.au



Neurological conditions affect the brain and spinal cord and are a leading cause of death and disability worldwide. These conditions include stroke, migraine, epilepsy, Alzheimer's, Parkinson's, motor neurone disease, meningitis, functional neurological disorder and acquired brain injury, as well as over 600 rare and genetic conditions as varied as Huntington's and muscular dystrophy.



Support for the neurological community

The Neurological Council of WA is a not-for-profit organisation dedicated to improving health and wellbeing by reducing the incidence and impact of brain, cognition and nervous system disorders.

Providing leadership for the Western Australian neurological community for over 30 years, we collaborate with research, health and disability professionals and organisations to champion **brain health** and improve community awareness, understanding and management of neurological conditions.

Many brain diseases are preventable.

Education, advocacy and informed policy, and service development are key to reducing the health and economic impacts of neurological conditions on individuals and society.

Neurocare services

Neurological symptoms can significantly impact a person's life due to sudden or progressive changes in their physical, behavioural or cognitive functioning. Carers and loved ones can also be affected.

The Neurological Council of WA provides patient-centred community **neurological nursing** care and health care navigation services to people of all ages living with a neurological condition or symptoms.

Our skilled team of neurological nurses and allied health professionals work alongside our client's treating professionals, offering individualised consultation, assessment, information, education, navigation and advocacy.

Our services help clients to:

- regain or maintain functional capacity
- improve health and wellbeing
- live confidently and safely in their home and community for as long as possible
- feel in control of their treatment journey
- explore and understand their options and make informed decisions about their current and future care.

Here when you need us

Accessing Neurocare

Clients do not need a diagnosis or medical referral to access assistance. If a person has symptoms, is newly diagnosed or has long had neurological problems, simply call or complete the **referral form** on our website and one of nurses will be in contact.

We accept referrals from:

- individuals, their family and friends
- neurologists and other medical specialists
- general practitioners
- allied health professionals
- aged and disability care providers
- community service organisations
- regional assessment agencies.

Neurocare is available state-wide via Telehealth. Our offices are located in Perth, Bunbury, Albany and Geraldton with residential care and home visits available in these locations.

