



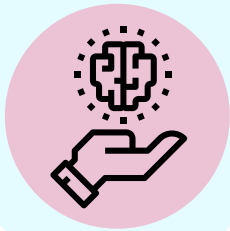
# Strategic Plan 2022-2025

## Mission:

*Leadership and community-based services for people affected by neurological conditions in Western Australia.*



### 1 Our Community



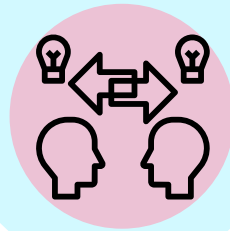
- Foster valued relationships with people affected by neurological conditions, based on care, respect, dignity, and mutual trust, with an emphasis on empowerment and autonomy through their life-course.
- Deliver person-centred, timely, effective, and efficient health care, including assistance with navigation, education, advocacy, support, and information for clients, carers, and families.
- Provide integrated, evidence-based programs, health care pathways and services to reduce the impact and burden of neurological disorders and to maximise quality of life and wellbeing.
- Provide accessible, equitable and affordable services that are responsive to regional, cultural, and social challenges.

### 2 Our Sector



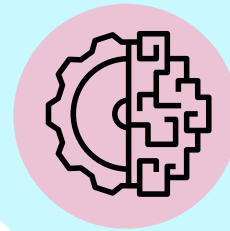
- Identify, strengthen, and amplify the voice of people impacted by neurological conditions to influence policy, plans, legislation, and funding.
- Collaborate with government, business, research organisations, and community stakeholders to advance the availability of multidisciplinary and multisectoral neurological services.
- Build stakeholder, funder and donor awareness, trust, and engagement to support the Council's mission, growth, and sustainability.
- Collaborate with organisations with a common purpose to create collective impact through ongoing communication, research, mutually reinforcing activities, sharing resources, advocacy, and sector representation.
- Create neurological health promotion campaigns aimed at increasing awareness of the importance of promoting and protecting brain health and preventing neurological disorders.

### 3 Our People



- Create a modern, safe, adaptable and well-functioning work environment.
- Inform, empower, and provide resources to staff to enable them to perform at their best.
- Build a high-performance team culture that is positive, productive, respectful, collaborative, and inclusive.
- Build capacity through continuous improvement of service offerings, models of care, consistency, professional development, and refinement and understanding of scope of practice.

### 4 Our Business



- Maintain a sound and ethical corporate governance framework with legislative, regulatory & program compliance.
- Develop a best practice organisational model that is contemporary and strategically aligned.
- Strengthen financial sustainability through funding security, aligned diversification, and revenue growth.
- Embrace and invest in business improvement, environmental sustainability, innovation, and data systems to improve customer value, improve community experience, and to monitor and report on client outcomes.
- Improve recognition of the Neurological Council as a leading provider of community neurological services.